

MicroCount Series



FEATURES:

- Miniature pre-designed totalizer for OEMs
- High contrast LCD display
- Low power consumption ideal for long life battery powered applications
- Can be directly mounted to a PC board
- Count speeds up to 10k Hz
- UL and CSA listed
- RoHS (upon request) & CE Compliant

APPLICATIONS:

- Amusement Machines
- Copiers and Printers
- Dispensing Machines
- Portable Equipment
- Ticket Machines
- Utility Meters
- Applications: For use without a power source

DESCRIPTION:

The **MicroCount I & I/AS** are 6 digit counters that can be panel or PCB mounted (a black panel mount bezel is included). They are housed in clear, polycarbonate, plastic

and connections are made by five pins. The MicroCount I is a totalizing counter and the I/AS is an add/subtract counter.

The **MicroCount II** is an 8 digit, totalizing, add/subtract counter that can be surface or PCB mounted. Two versions are available: the "IIR" with front push button reset or the "II" without push button reset. The counter is housed in black, polystyrene, plastic and connections are made by six pins.

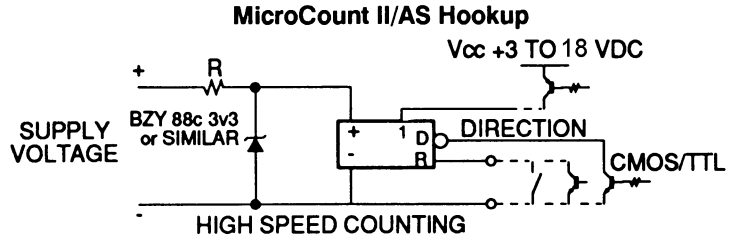
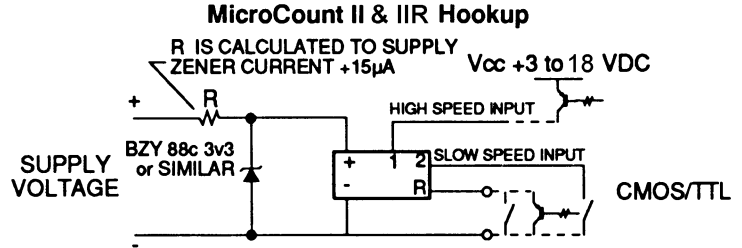
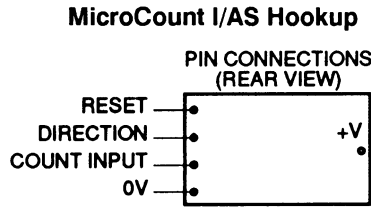
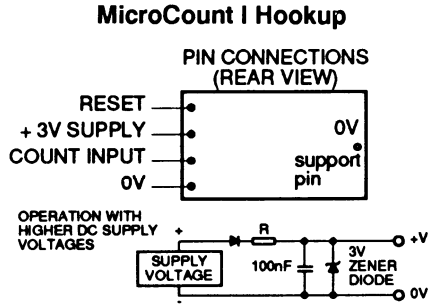
The **MicroCount V** is a 6 digit battery powered totalizing counters. It has leads for remote contact and increments on contact open. A black panel mount bezel is included.

SPECIFICATIONS:

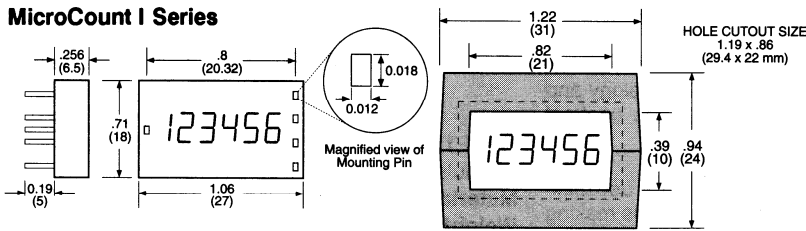
Model	MicroCount I MicroCount I/AS	MicroCount II MicroCount IIR	MicroCount V
Function	Totalizer /AS = add/subtract	Totalizer add/subtract	Totalizer
Display	6 digit, high contrast LCD, 6mm (0.2") characters	8 digit, high contrast LCD, 8mm(0.315") characters	6 digit, LCD, 6mm (0.2") characters
Voltage Supply	2.6 to 3.4 VDC		1.5V button cell 386 or SR43 battery, 3-4 year (supplied)
Power	5 μ A typical, 10 μ A at 10k Hz (MicroCount I: 15 μ A)		
Count input	1) High speed solid state: Negative edge triggered 0.7 volt threshold, +18 VDC max. input, TTL and CMOS compatible. 2) (MicroCount II or IIR only) Slow speed non-voltage: Contact closure or open collector transistor		Non-voltage: Contact closure, operates on contact open
Count speed	High speed solid state: 10k Hz max. rate (min. on/off time 50 μ sec.). Slow speed non -voltage: 30 Hz (min. on/off time 15mSec).		12 Hz max.
Direction	Add = logic 1, subtract = logic 0 (0V)		
Reset	1) Non-voltage: contact closure or open collector, TTL and CMOS compatible (min. pulse 15mSec). 2) Front push button: MicroCount IIR only		Reset on insertion of battery
Housing	Clear polycarbonate plastic Black ABS bezel	Black polystyrene plastic	Clear polycarbonate plastic Black ABS bezel
Mounting	PC board or panel w/ bezel	PC board or surface mount	Panel mount w/ bezel
Connection	5 PC board pins	6 PC board pins	2 Leads
Temperature	Operating: +14 to +140 °F / -10 to + 60 °C Storage: -14 to +158 °F / -20 to +70 °C		Operating: +14 to +122 °F / -10 to + 50 °C Storage: -14 to +140 °F / -20 to +60 °C
Weight	0.26 oz / 7.4 g	0.5 oz / 14.2 g	0.26 oz / 7.4 g
Approval	UL, CSA and CE		CE

Counter

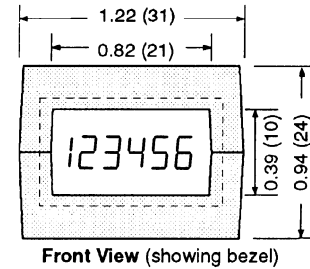
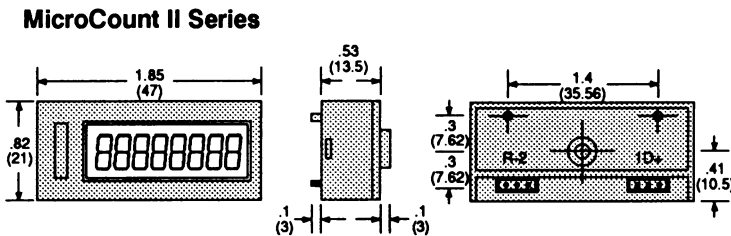
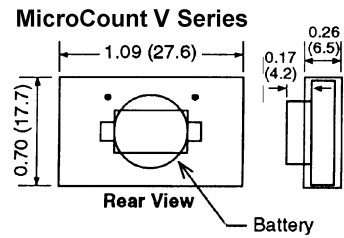
WIRING:



DIMENSIONS: inches (mm)



adaptor clips into panel .050 to .125 thick



Ordering information:

Model	Description
MicroCount I	Totalizer
MicroCount I/AS	Totalizer, add/subtract
MicroCount PMB	Panel mount bezel for MicroCount I
MicroCount II	Totalizer, add/subtract
MicroCount IIR	Totalizer, add/subtract, button reset
MicroCount V	Self powered totalizer with leads