

1.0 TCSOFT HELP MANUAL TABLE OF CONTENTS

1.1 Brief Introduction and System Requirement.....	2
1.2 System Installation and Setting	3
1.3 Procedure	6
2.0 Brief Introduction	9
2.1 File (File) Option	10
2.2 Function Selection Option	13
2.3 Communication (Communication) Option.....	16
2.4 Monitor (Monitor) Option.....	18
2.5 Option (Option).....	21
2.6 Help (Help) Option.....	24

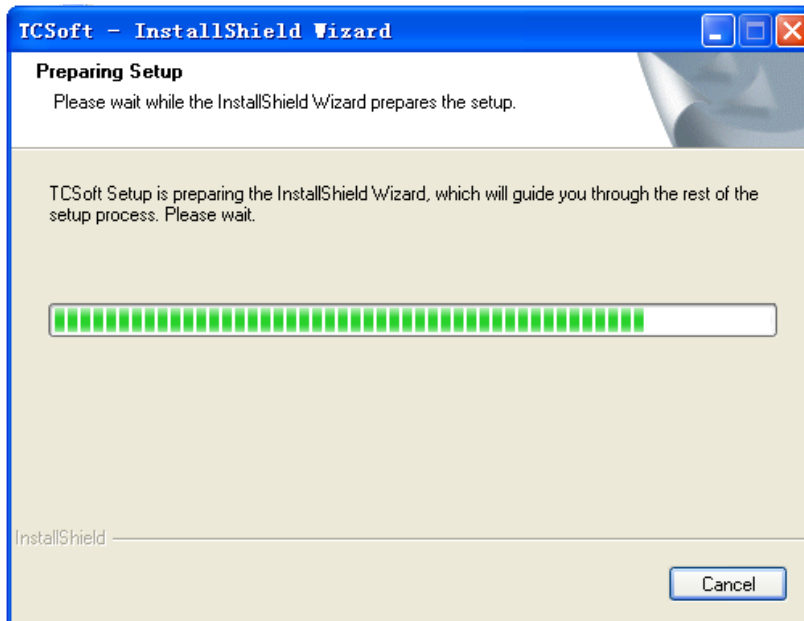
1.1 Brief Introduction and System Requirement

TCSOFT is a set-editing software for Fargo Controls TC-Pro48x/72x/96x models under the WINDOWS operating system. TCSOFT not only can provide a set-editing for timer, counter and tachometer, but also can provide more convenient functions (e. g. file, save, upload, download, monitor and logging etc.)

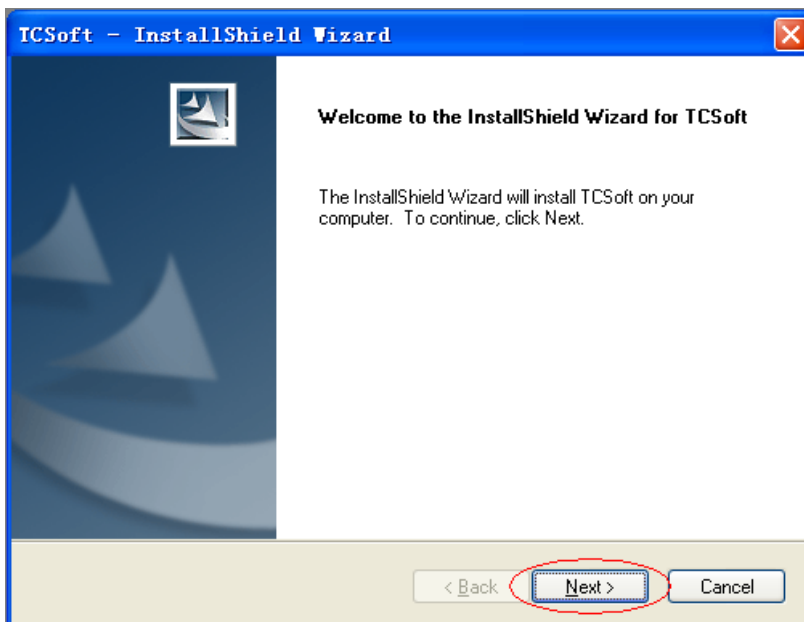
Item	System requirement
Operating system	Windows 2000/XP
CPU	Pentium 90 min.
Memory	16MB min. (32MB min. recommended)
Disk driver	Hard disk (HD) capability: 30MB min.
Display	Resolution:640 × 480 , more than 16 colors (800 × 600 pixels) recommended)
Mouse	General mouse or Windows-compatible device
RS-232 port	At least one RS-232 port from COM1~COM16 can be connected with TC-Pro48x/72x/96x
Applicable Model	TC-Pro48x/72x/96x models

1.2 System Installation and Setting

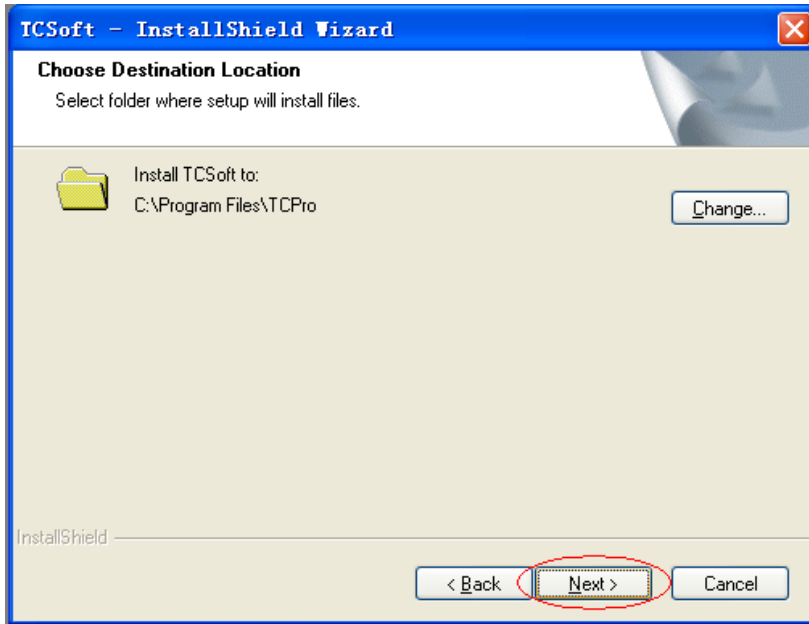
1. Start the operating system Windows 2000/XP
2. Insert TCSOft CDRom into CD-ROM driver or download TCSOft package from www.fargocontrols.com/software/TCSOft_V103_FargoControls.rar.
3. Press START button, and select the project implemented.
4. Choose SETUP.EXE path of TCSOft package
5. Double-click SETUP.EXE and the installation interface of TCSOft is shown as below.



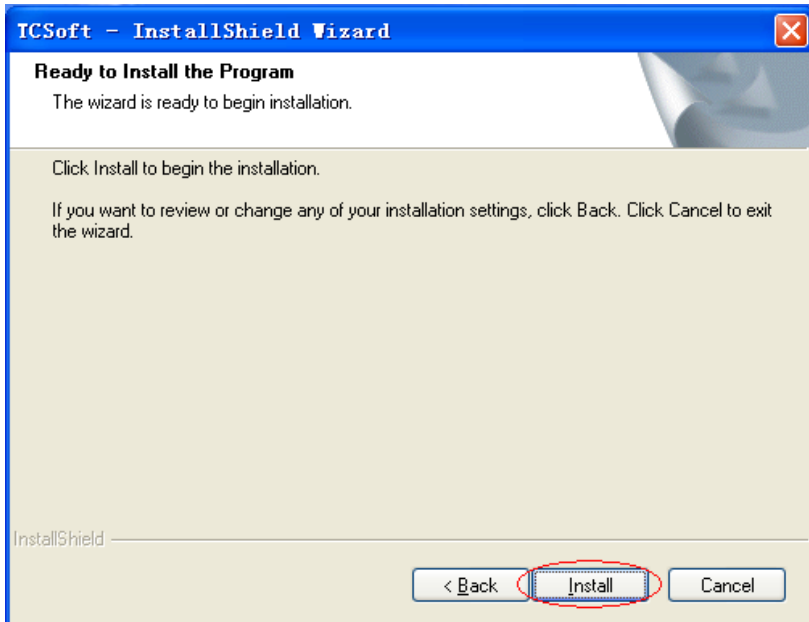
6. Enter the installation window of TCSOft shown below, and click NEXT to enter the next step of installation.



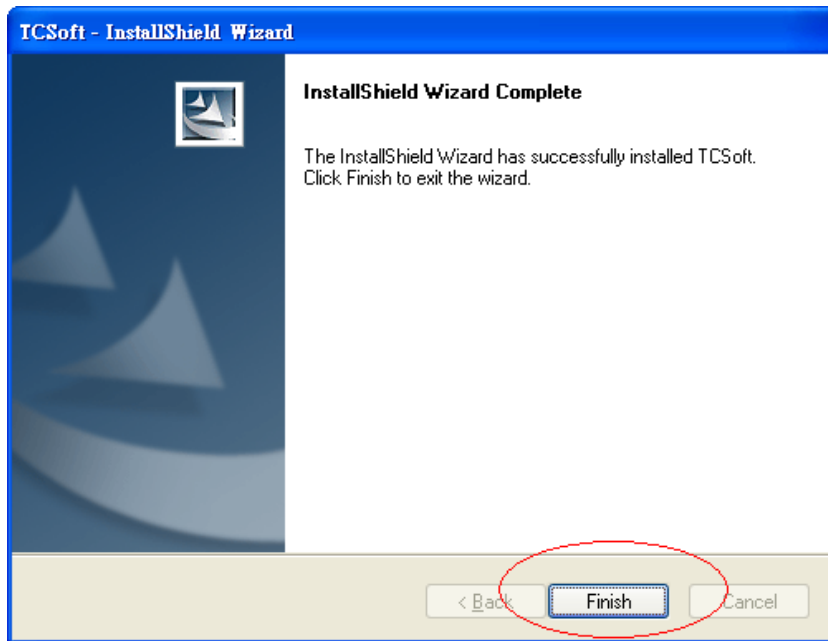
7. By clicking “Change” button, you can modify the installation path, and then click NEXT to enter the next step of installation.



8. Click “Install” button, and the installation program will proceed to the automated installation procedure.

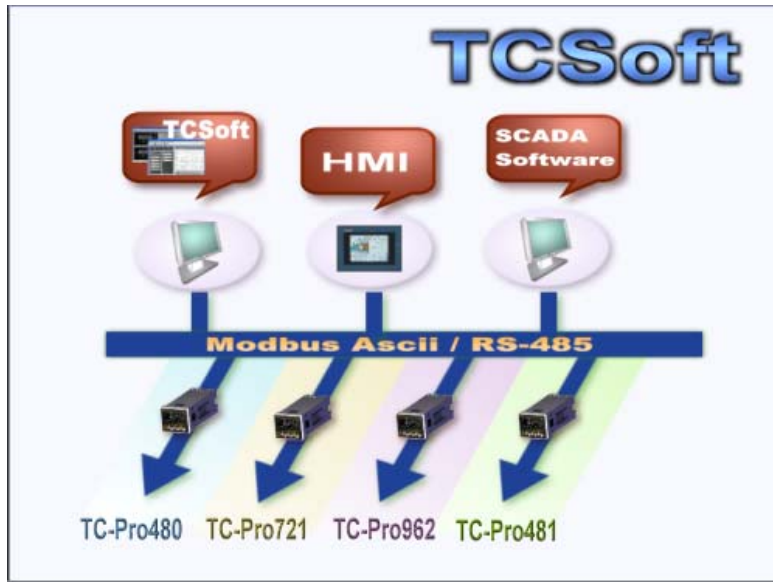


9. Click Finish button to complete the installation process.

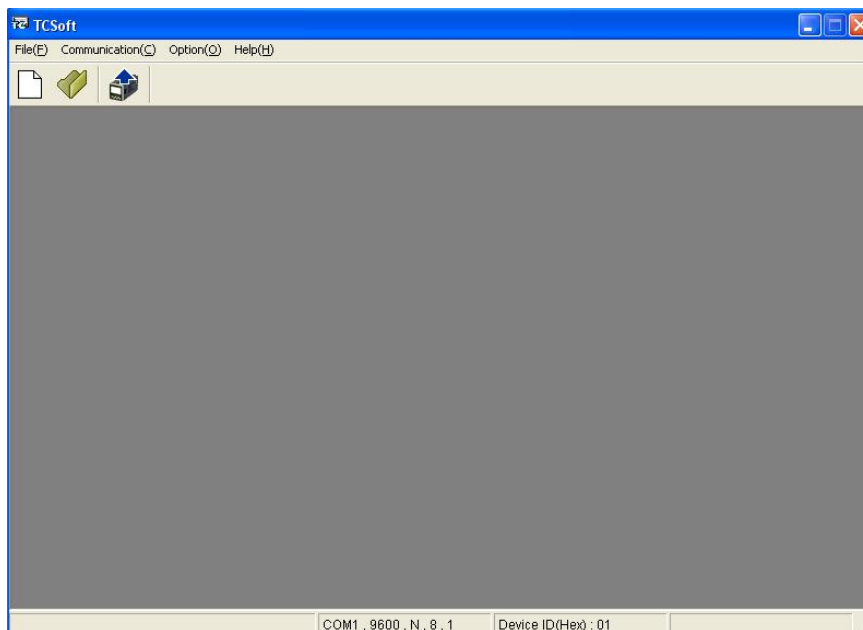


1.3 Procedure

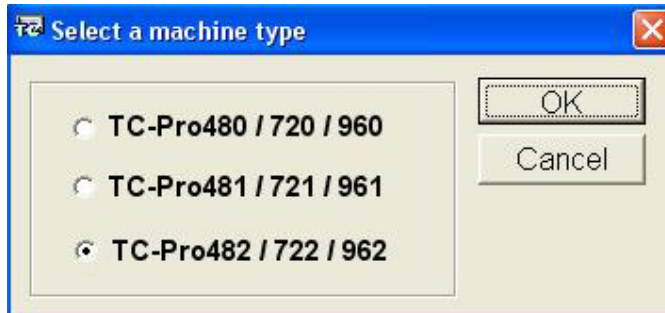
After completing installation procedure, TCSOft procedure has been established in the designated default subdirectory "C:\Program Files\TCPro". Directly click TCSOft icon to implement the set-editing software. Then the start window of TCSOft set-editing software will appear as follows.



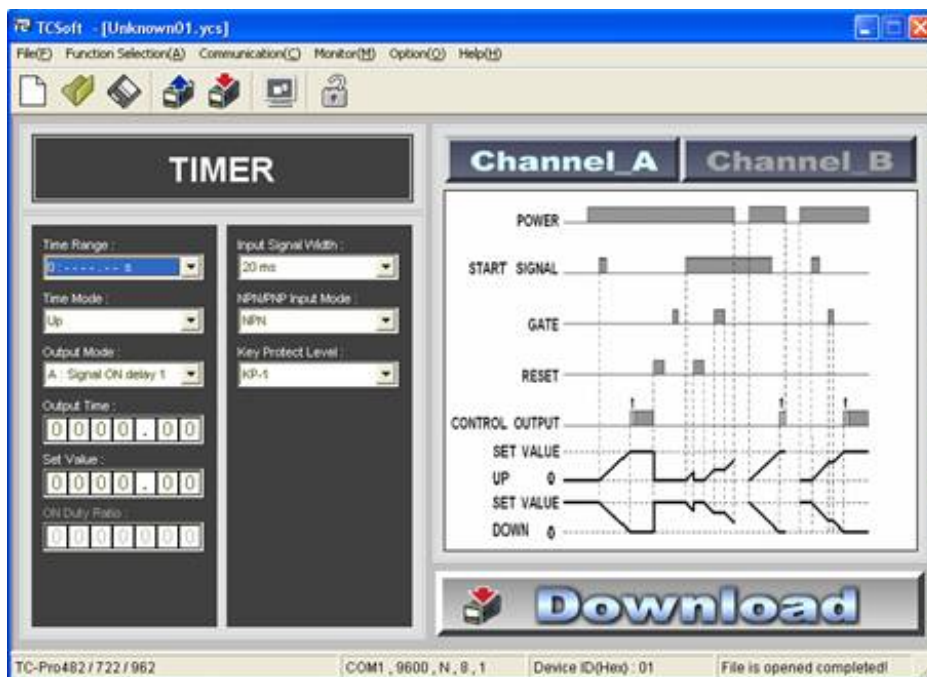
After three seconds TCSOft set-editing window will appear as follows. If you do not select [New], [Open] or [Upload] while in the opening of TCSOft, window only shows [File(F)], [Communication(C)], [Option(O)] and [Help(H)] menu.



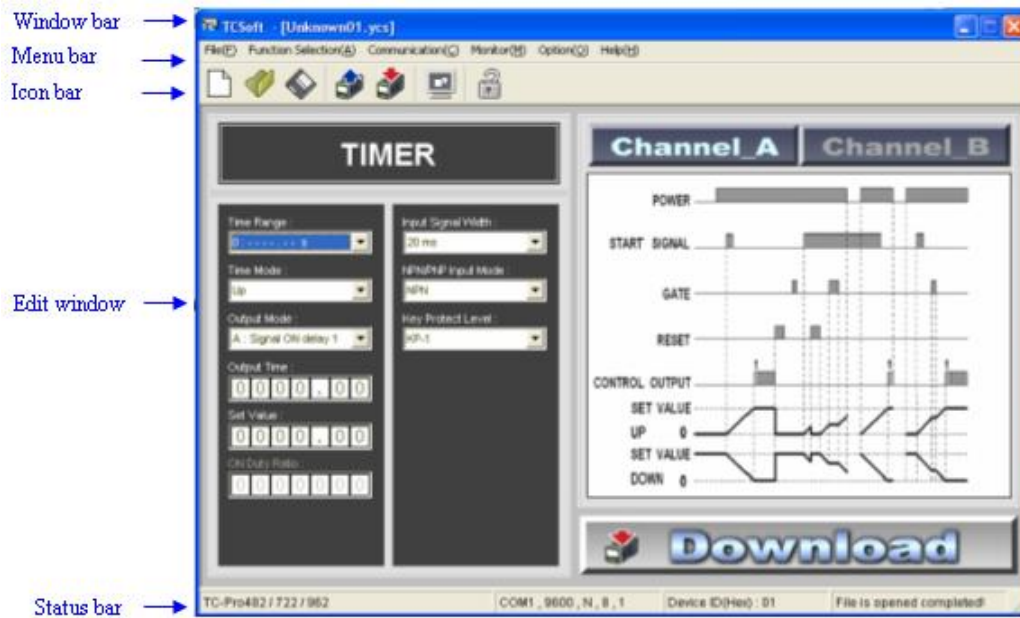
After selecting 『File』 → 『New』, the models selection window will appear as follows.



After clicking the OK button, a set-editing window will show as follows.



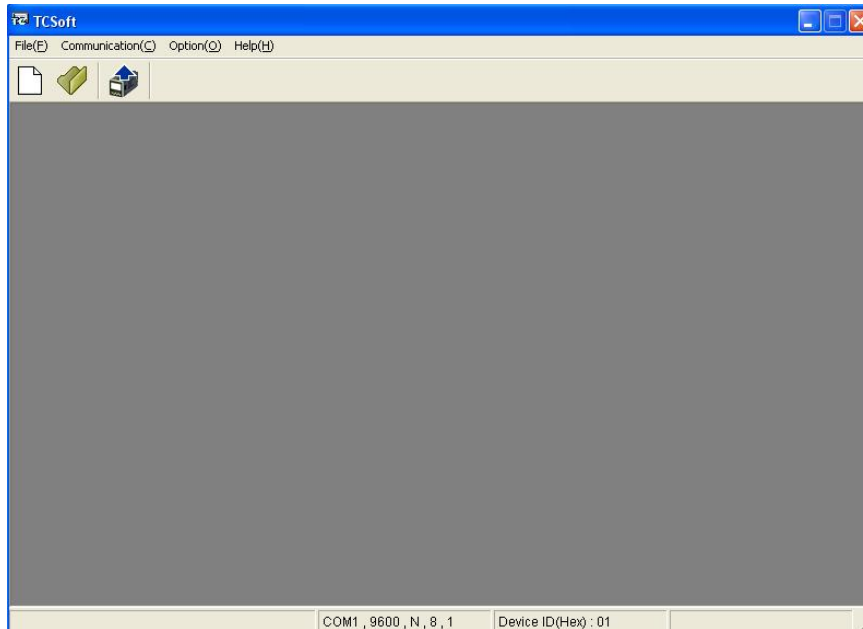
If you click 『File』 → 『Open』 or 『Communication』 → 『Upload』, the corresponding function and setting windows will be open. TCSOft set-editing window is shown as an example in the following figure.



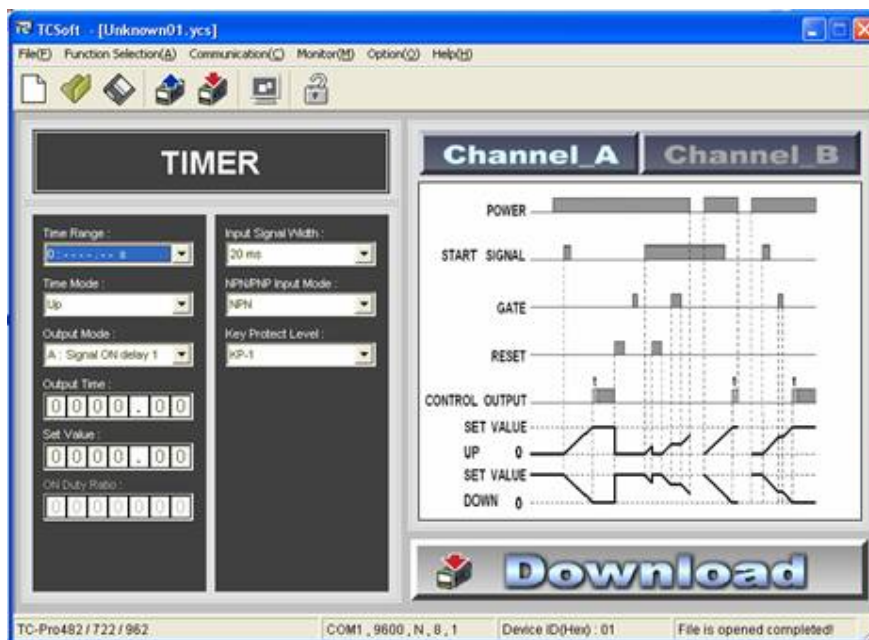
- **Window bar:** Shows the current file name.
- **Menu bar:** shows 6 main options in the menu bar, including 『File(F)』, 『Function Selection(A)』, 『Communication(C)』, 『Monitor(M)』, 『Option(O)』 and 『Help(H)』.
- **Icon bar:** Select your required function button directly by clicking the shortcut
- **Edit window:** Edit the set values, Then directly download it into the TC unit. That can reduce the inconvenience for operating and setting the TC unit manually thought the keypad.
- **Status bar:** Shows many messages including model, communication port, communication format, station No. etc.

2.0 Brief Introduction

TCSOft has launched the first window as below, which has only the four options, including File (F) , Communication (C) , Option (O) and Help (H) .



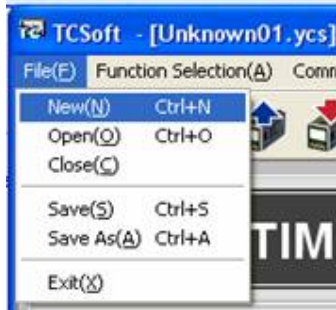
After selecting the new file under the pull-down menu of 『File (F) 』 menu, a new window will be shown as below, which adds the other options such as 『Function Selection (A) 』 and Monitor (M) 』 .




2.1 File (File) Option

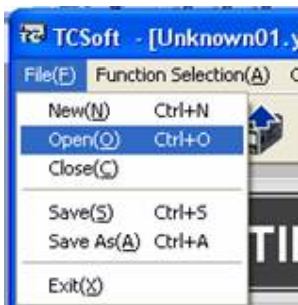
The pull-down menu of 『File (F) 』 is shown as below, which can provide the following options.


2.1.1 New



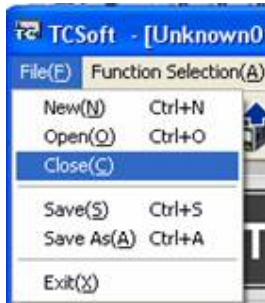
New File	
Function Explanation	Create a new set-editing file and close the current set-editing file
Operation Method	<ul style="list-style-type: none"> ◎ Method 1: Click 『New(N)』 under 『File (F) 』 menu ◎ Method 2: Click  icon in the icon bar ◎ Method 3: Enter (Ctrl) + (N) by shortcut key

2.1.2 Open



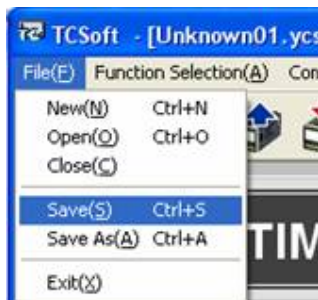
Open	
Function Explanation	Open the old file saved in disk drive and close the current set-editing file
Operation Method	<ul style="list-style-type: none"> ◎ Method 1: Click 『Open(O)』 under 『File (F) 』 menu ◎ Method 2: Click  icon in the icon bar ◎ Method 3: Enter (Ctrl) + (O) by shortcut key


2.1.3 Close



Close	
Function Explanation	Close the current editing project
Operation Method	◎ Method: Click 『Close(C)』 under 『File (F)』 menu

2.1.4 Save



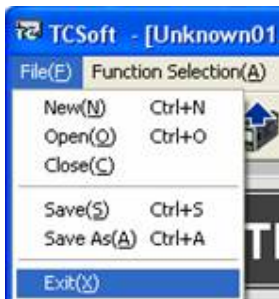
Save	
Function Explanation	Save the current editing data file into the disk drive
Operation Method	◎ Method 1: Click 『Save(S)』 under 『File (F)』 menu ◎ Method 2: Click  icon in the icon bar ◎ Method 3: Enter (Ctrl) + (S) by shortcut key


■ 2.1.5 Save as



Save as	
Function Explanation	Save the current file into the other file name
Operation Method	<ul style="list-style-type: none"> ◎ Method 1: Click 『Save as(S)』 under 『File (F)』 menu ◎ Method 2: Enter (Ctrl) + (A) by shortcut key

■ 2.1.6 Exit

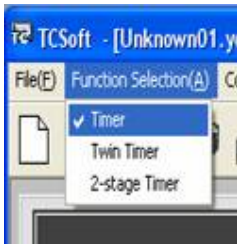


Exit	
Function Explanation	Exit TCSOFT window
Operation Method	<ul style="list-style-type: none"> ◎ Method 1: Click 『Exit(X)』 under 『File (F)』 menu ◎ Method 2: Click  icon on the top right corner window

2.2 Function Selection Option

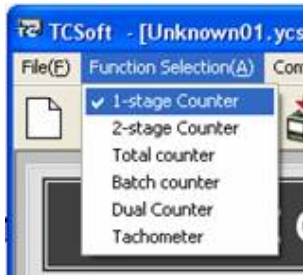
The pull-down menu of 『Function Selection (A)』 will show different options according to the different models, as below.

2.2.1 TC-Pro480/720/960 models:



Timer	
Function Explanation	Set function as Timer
Operation Method	◎ Method: Click 『Timer』 under 『Function Selection (A)』 menu
Twin Timer	
Function Explanation	Set function as Twin Timer
Operation Method	◎ Method: Click 『Twin Timer』 under 『Function Selection (A)』 menu
2-Stage Timer	
Function Explanation	Set function as 2-Stage Timer
Operation Method	◎ Method: Click 『2-Stage Timer』 under 『Function Selection (A)』 menu

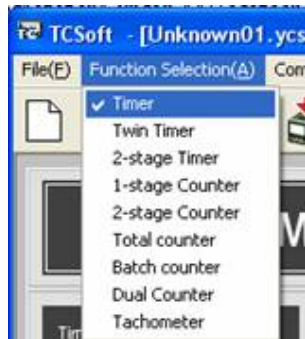
2.2.2 TC-Pro481/721/961 models



1-Stage Counter	
Function Explanation	Set function as 1-Stage Counter
Operation Method	◎ Method: Click 『1-stage Counter』 under 『Function Selection (A)』 menu
2-Stage Counter	
Function Explanation	Set function as 2-Stage Counter
Operation Method	◎ Method: Click 『2-stage Counter』 under 『Function Selection (A)』 menu
Total Counter	
Function Explanation	Set function as Total Counter
Operation Method	◎ Method: Click 『Total Counter』 under 『Function Selection (A)』 menu
Batch Counter	
Function Explanation	Set function as Batch Counter
Operation Method	◎ Method: Click 『Batch Counter』 under 『Function Selection (A)』 menu
Twin Counter	
Function Explanation	Set function as Twin Counter
Operation Method	◎ Method: Click 『Twin Counter』 under 『Function Selection (A)』 menu

Tachometer	
Function Explanation	Set function as Tachometer
Operation Method	© Method: Click 『Tachometer』 under 『Function Selection (A)』 menu

▣ 2.2.3 TC-Pro482/722/962 models

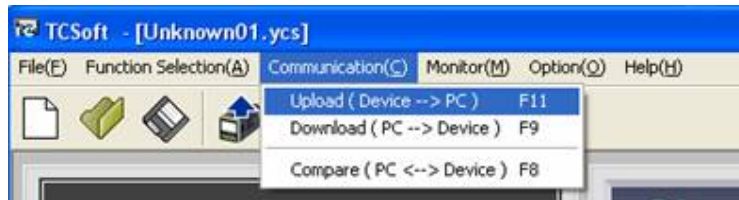



TC-Pro482/722/962 models can offer all functions, both TC-Pro480/720/960 and TC-Pro481/721/961, including Timer, Twin Timer, 1-Stage Timer, 1-Stage Counter, 2-Stage Counter, Total Counter, Batch Counter, Twin Counter and Tachometer. User can select desired function, which is mentioned above.

2.3 Communication (Communication) Option

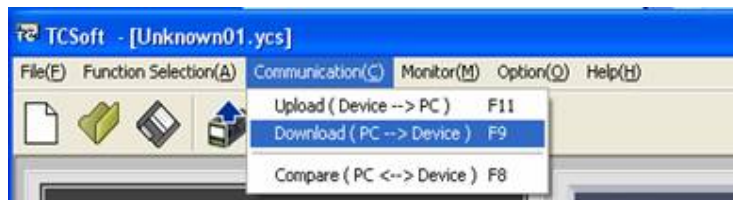
The pull-down menu of 『Communication(C)』 will offer 3 options as shown below.


2.3.1 Upload(Device → PC) :



Upload (Device → PC) [note 1]	
Function Explanation	Communicate between PC and TC-Pro series models, read and show the current set value
Operation Method	<ul style="list-style-type: none"> ◎ Method 1: Click 『Upload(Device → PC)』 under 『Communication(C)』 menu ◎ Method 2: Click  icon in the icon bar ◎ Method 3: Enter (F11) by shortcut key

2.3.2 Download(PC → Device) :



Download (PC → Device) [note 1]	
Function Explanation	Communicate between PC and TC-Pro series models, and download the set value on PC into TC-Pro series models
Operation Method	<ul style="list-style-type: none"> ◎ Method 1: Click 『Download (PC → Device)』 under 『Communication (C)』 menu ◎ Method 2: Click  icon in the icon bar ◎ Method 3: Enter (F9) by shortcut key

▣ 2.3.3 Compare (PC <--> Device)



Compare (PC <-->Device) [note 1]	
Function Explanation	Communicate between PC and TC-Pro series model, which can compare the set value on PC with the current value on TC-Pro series model and show the differences.
Operation Method	<ul style="list-style-type: none"> ◎ Method 1: Click 『Compare(PC → Device)』 under 『Communication (C)』 menu ◎ Method 2: Enter (F8) by shortcut key


※ [Note 1] you must set the communication COM port, communication format and station No. before communicating.

2.4 Monitor (Monitor) Option

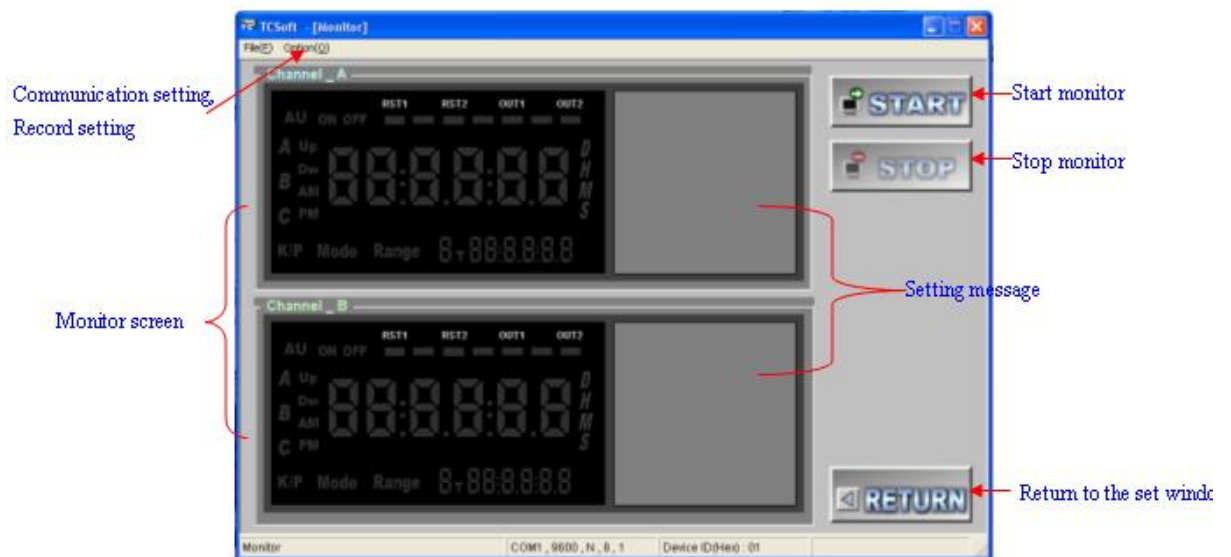
The pull-down menu of 『Monitor(M)』 is shown below.

2.4.1 Monitor



Monitor	
Function Explanation	Enter the monitor screen
Operation Method	<ul style="list-style-type: none"> ◎ Method 1: Click 『Monitor』 under 『Monitor (M)』 menu ◎ Method 2: Click  icon in the icon bar ◎ Method 3: Enter (Ctrl + M) by shortcut key

The monitor window is shown as follows.



- 『START』 button: Start to communicate TC-Pro series model with PC after pressing START button, and read the set value, current value and other set value, as shown in the above figure.

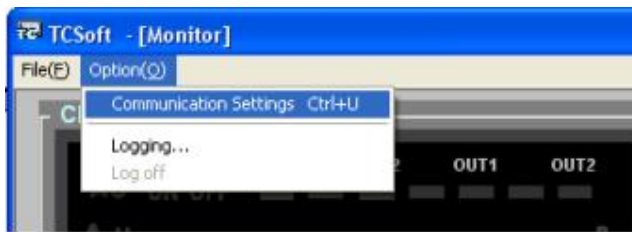
- 『STOP』 button: Stop the communication with TC-Pro series model
- 『RETURN』 button: Return to the former set window
- Monitor window: Show the present value, the set value, output status and key-protection switch etc.
- Set message window: It can automatically judge and show the model and the other settings at the beginning of monitoring.


▫ 2.4.2 Return



Return	
Function Explanation	Return to the former set screen
Operation Method	<ul style="list-style-type: none"> ◎ Method 1: Click 『Return』 under 『File(F)』 menu ◎ Method 2: Click 『RETURN』 button

▫ 2.4.3 Communication Settings



Communication Settings	
Function Explanation	Enter to the set screen
Operation Method	<ul style="list-style-type: none"> ◎ Method 1: Click 『communication settings』 under 『Operation(O)』 menu ◎ Method 2: Click  icon in the icon bar ◎ Method 3: Enter (Ctrl + U) by shortcut key

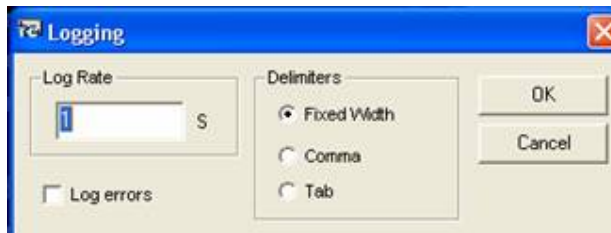
Refer to section 2.5.1 for details on the setting method.

▣ 2.4.4 Logging



Logging	
Function Explanation	Enter to the logging set screen
Operation Method	◎ Method 1: Click 『Logging』 under 『Option(O)』 menu

The logging screen is shown below:



- **Log rate:** Set the time interval for logging, and only record the current value
- **Log error:** It will record “Error” without reading the current value successfully when this option is selected.
- **Delimit:** Set the delimit sign for every data

Start to log the current value and save it to a log file while pressing OK. While the communication is paused, the record will be stopped. It will continue to the previous record again unless going back to communicate. When you press “stop record”, record will end.

2.5 Option (Option)

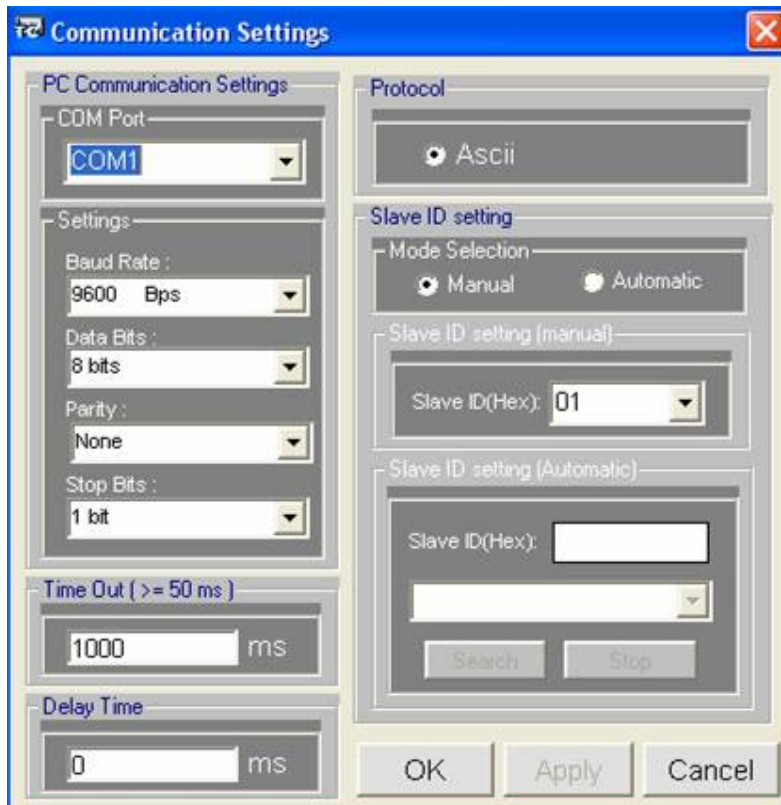
The pull-down menu of 『Option(0)』 is shown below.

2.5.1 Communication Settings



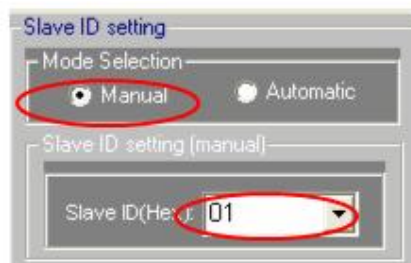
Communication Settings	
Function Explanation	Enter to the communication set screen
Operation Method	<ul style="list-style-type: none"> ◎ Method 1: Click 『communication settings』 under 『Option(0)』 menu ◎ Method 2: Enter (Ctrl + U) by shortcut key

The communication settings screen is shown below:

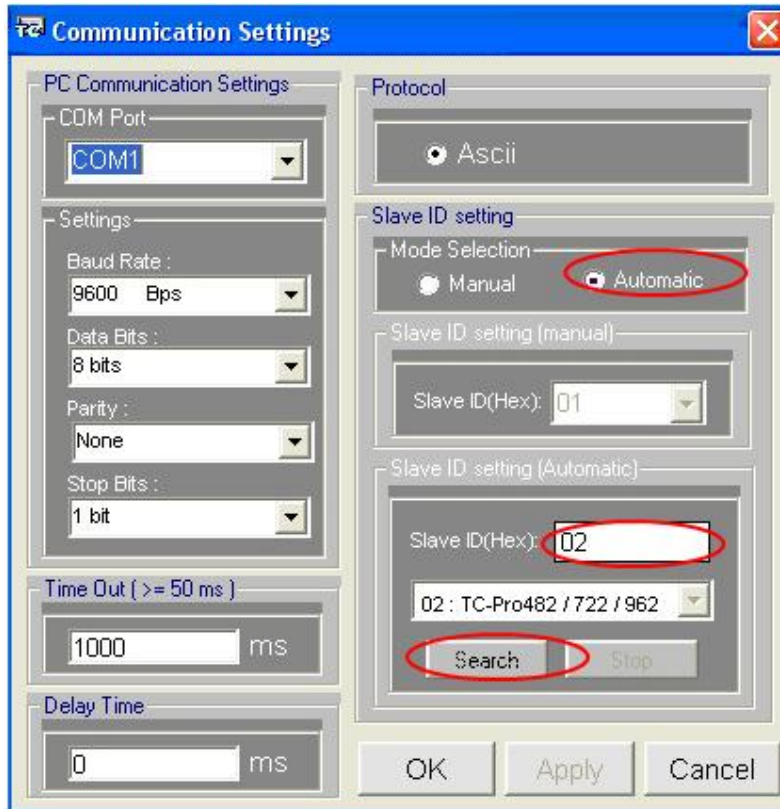


- **Communication port:** The default COM1
- **Communication format:** Set the communication format
 - Communication speed: the default 9600 Bps
 - Data bit: the default 8 bits
 - Parity: None
 - Stop bit: the default 1 bits
- **Communication response time:** The maximum waiting time for response after sending data, the default value is 100ms, the minimum value can not be set below 50ms
- **Communication delay time:** The delay time for sending the next data after receiving data, the default value is 0 ms
- **Communication Protocol:** Only MODBUS ASCII supported
- **Communication station setting:** Set the communication station NO., which can be divided into Manual Setting and Automatic Search

◎ **Manual Setting:** Set the communication station No. by manual, the range value is 01~FF (Hex), the default value is 01.




◎ **Automatic Search:** Automatically search the current station No. from 01 to FF (Hex) for TC-Pro according to the current communication port and format. If not searching, please be sure that the communication format is the same between PC and TC-Pro and the communication response time is not too short. If lots of TC-Pro machines are running at the same time, all of station No. and models will be listed. You can choose your desired station No. and press OK or APPLY button.



※The current setting state does not change until pressing APPLY or OK button. If you want to change the set value while using automatic search, you must press APPLY button to change the current setting state and then search.

2.5.2 Key Protection



Key Protection	
Function Explanation	Set key enable/unable according the current Key Protection Level to prevent users from changing settings.
Operation Method	<ul style="list-style-type: none"> ◎ Method 1: Click 『Key Protection』 under 『Option』 menu ◎ Method 2: Click  icon in the icon bar ◎ Method 3: Enter (Ctrl + K) by shortcut key

2.6 Help (Help) Option

The pull-down menu of 『Help(H)』 will shown below.

- ▣ 2.6.1 TCSOft Help (if not included in your version see pdf help file in original download)



TCSOft Help	
Function Explanation	Explanation about TCSOft installation and functions
Operation Method	◎ Method 1: Click 『Help』 under 『Help』 menu ◎ Method 2: Enter (F1) by shortcut key

- ▣ 2.6.2 About me



About me	
Function Explanation	Show TCSOft version and related information
Operation Method	◎ Method: Click 『About me』 under 『Help (H)』 menu